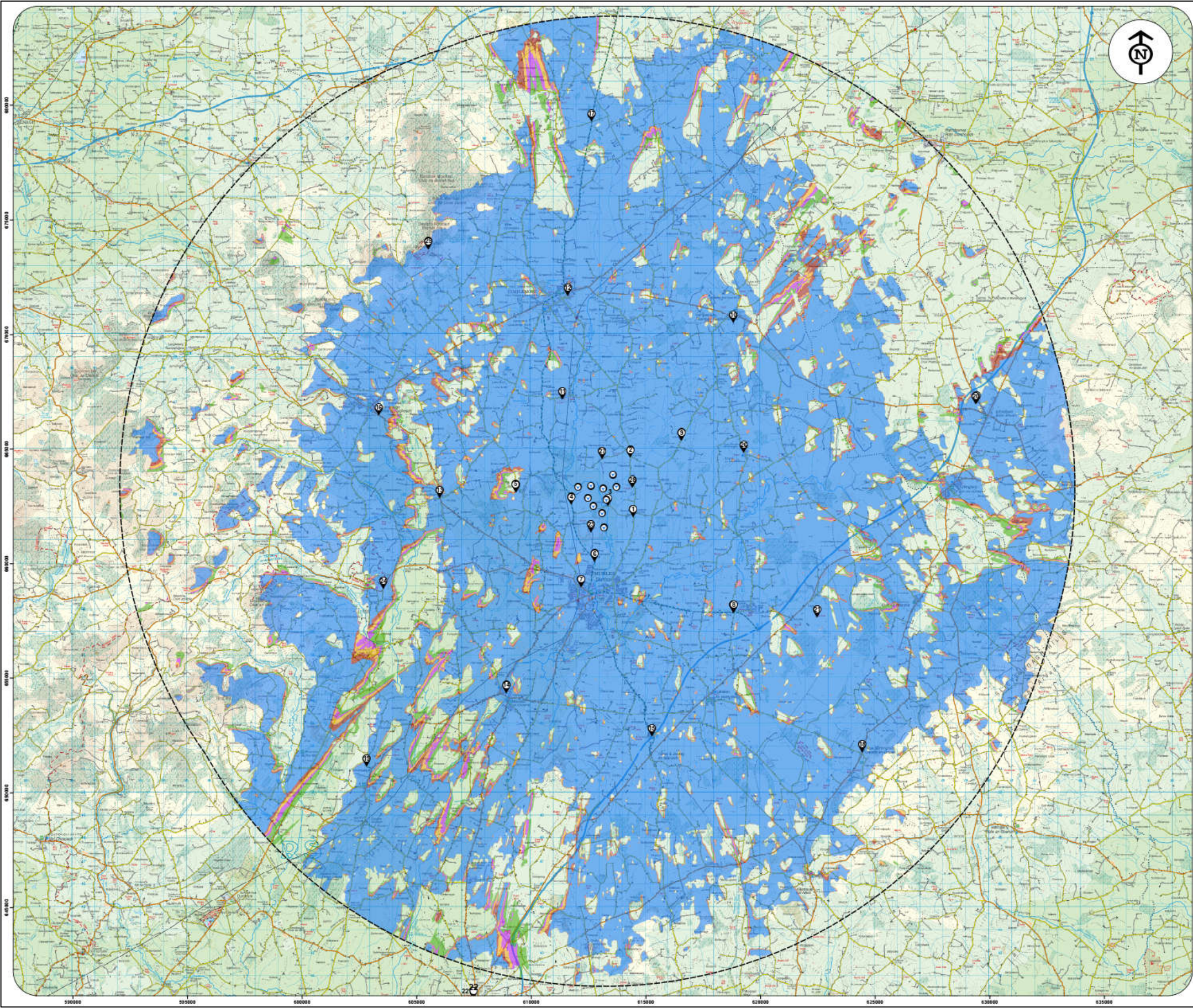


Appendix 15A

MAP OF ZONE OF THEORETICAL VISIBILITY TO HUB HEIGHT



Zone of Theoretical Visibility (ZTV) Map
indicating areas with a theoretical view
of the proposed Brittas turbines

Calculated to Hub Height (105m)

Proposed Brittas Turbines



No. Brittas Turbines Visible

- 1 - 2
- 3 - 4
- 5 - 6
- 7 - 8
- 9 - 10

Photomontage Locations



Brittas Turbines 20km Extent



FINAL

Date: 5th May 2024

Scale when printed at A1 Size = 1:75,000

1 centimeter = 750 meters

Notes:

- Theoretical visibility is based on an observer being able to see at least a full turbine blade.
- Theoretical visibility is based on an observer eye level of 2m above ground level.
- Calculation does not account for screening due to vegetation, forestry, buildings or any other similar forms of screening.
- Calculation has been run using Ordnance Survey 10m DTM height data.
- Earth curvature and light refraction has been included in this calculation.



innovision
innovision.ie